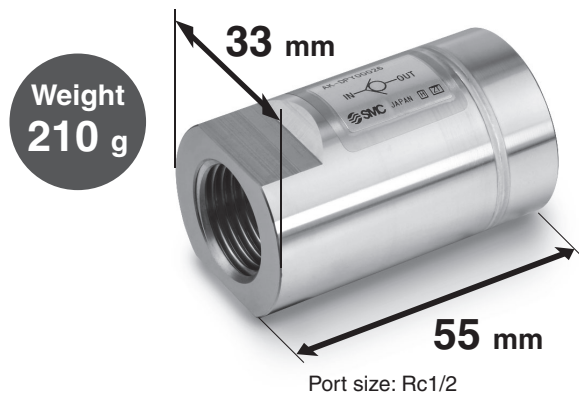
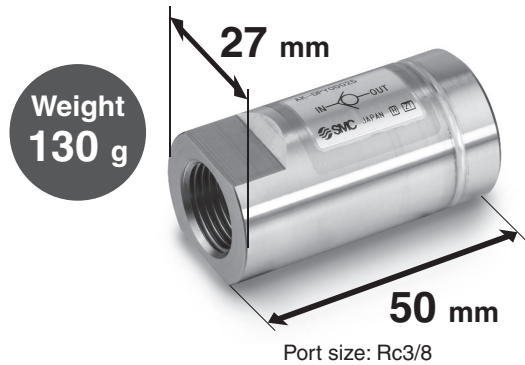


High Pressure Coolant Check Valve

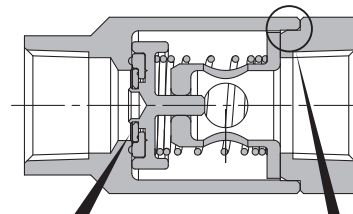
RoHS

Max. operating pressure: 15 MPa

■ Compact and lightweight



■ Structure that prevents foreign matter from piling up around the main valve



High seal reliability

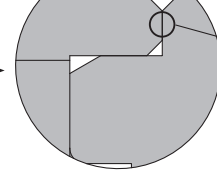
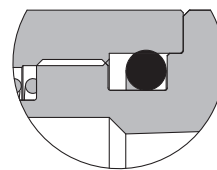
Valve leakage: 1 ml or less

Laser-welded connection prevents looseness

Thread + O-ring

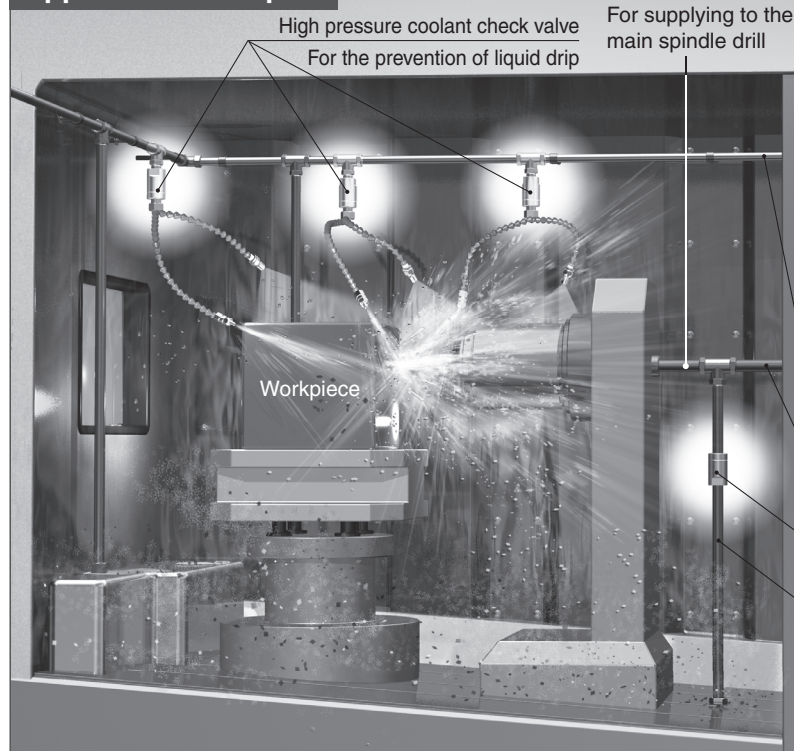
New

Welding



Laser welding

Application examples



Related Products

* Refer to the catalogue on <https://www.smc.eu> for details.

Low-pressure lines

For checking low pressure



Coolant valve
SGC



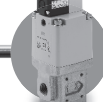
Pressure switch
ISE7□G



Flow switch
LFE

Medium- and high-pressure lines

For checking high pressure



Coolant valve
SGH



Pressure switch
ISE7□G

Coolant blow line

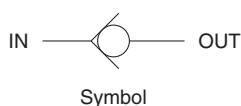
High pressure coolant check valve
For coolant backflow prevention

Air blow line

AK-DPY00025/26

21-EU775-UK

AK-DPY00025/26



Model

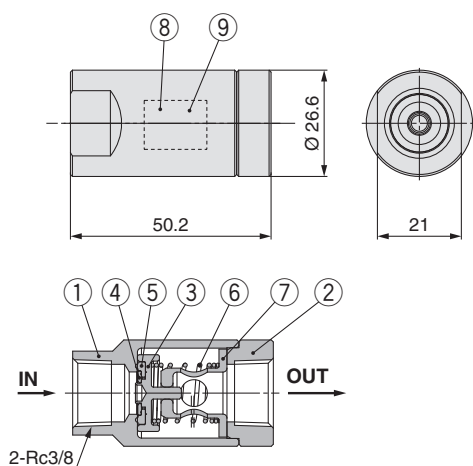
Model	Port size	
	Rc3/8	Rc1/2
AK-DPY00025	●	—
AK-DPY00026	—	●

Specifications

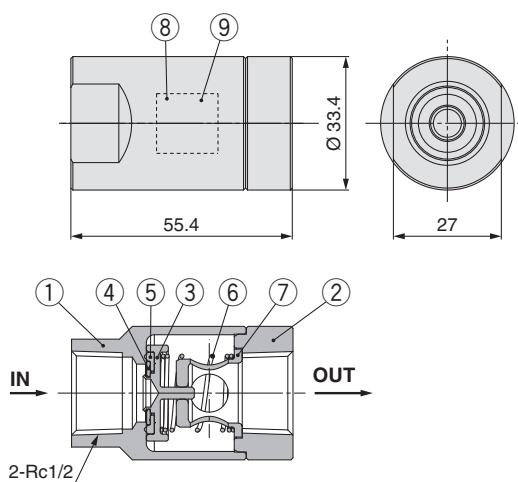
Fluid	Coolant (Liquid that does not corrode the material used)
Proof pressure	22.5 MPa
Max. operating pressure	15 MPa
Min. operating pressure	0.1 MPa
Ambient and fluid temperatures	−10 to 60 °C (No freezing)
Port size	Rc3/8, Rc1/2

Construction/Dimensions

AK-DPY00025



AK-DPY00026



Component Parts

No.	Description	Material
1	Body A	Stainless steel 304
2	Body B	Stainless steel 304
3	Valve A	Stainless steel 303
4	Valve B	Stainless steel 303
5	Valve seal	FKM
6	Spring	Stainless steel 304
7	Stopper	Stainless steel 303
8	Heat-transferred label	PET
9	Over laminate	PET

* Laminated to prevent peeling of the nameplate

SMC Corporation

SMC CORPORATION
Akihabara UDX 15F, 4-14-1, Sotokanda, Chiyoda-ku, Tokyo 101-0021, JAPAN
Phone: 03-5207-8249 FAX: 03-5298-5362
SMC CORPORATION All Rights Reserved

European Marketing Centre (EMC)

Zuazobidea 14, 01015 Vitoria
Tel: +34 945-184 100 Fax: +34 945-184 124
URL <http://www.smc.eu>